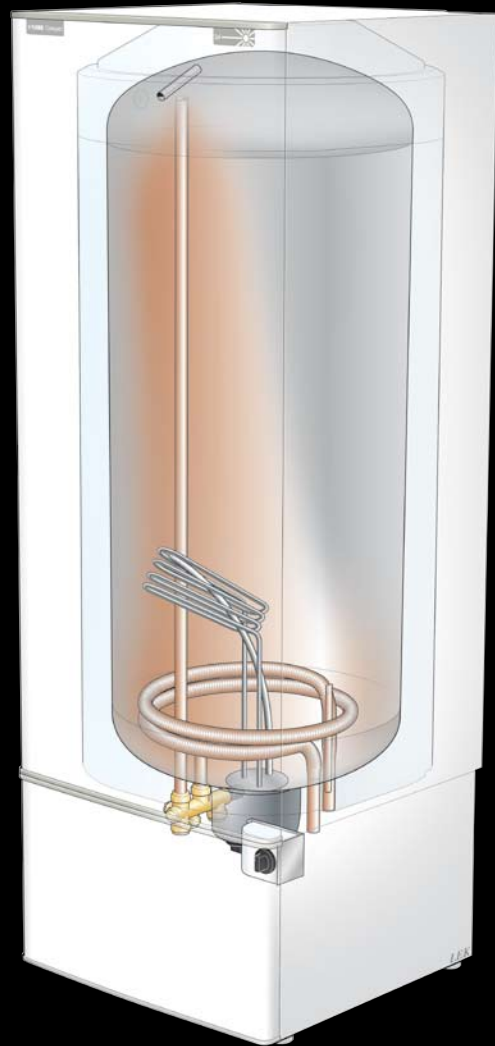


# NEW!

## COMPACT SOL

### COMPACT SOL 300

- Copper comb pipe coil for connection to solar panel
- Good heat insulation with EPS
- Piping can be routed up from beneath or down from above.



## COMPACT SOL

Copper lined electric water heater that can utilise the heat of the sun.

The water tank consists of a steel vessel, with a copper lining to protect against corrosion. Copper comb pipe coil for connection to solar panel. The pressure vessel is designed and manufactured for a maximum cut-off pressure of 9 bar. The water tank is insulated with EPS (environmentally friendly cellular plastic), which provides good thermal insu-

lation. The water heater is designed for upright installation. A complete set of valves, consisting of a mixer valve, non-return valve, vacuum valve, safety/drain valve and shut-off valve, are factory fitted. Suitable area for the connected solar panel for COMPACT SOL is up to 6m<sup>2</sup>

